



making work easy



New
Products
2019

- ➔ Equipment
- ➔ Instruments
- ➔ Materials
- ➔ and more

How do you know what makes work easier?

Easy working, clear direction. Renfert products have a wide range of advantages, which users will appreciate each day for years to come. You can identify them quickly and easily with these five icons:

making work easy



tool included



easy use



silent



perfect
view



compact

New products | Contents

EASY view 3D , 3D video microscope	4-5	SILENT powerCAM EC , CAM extraction	11
AUTO spin , Model system	6	GEO Expert Functional , Functional modeling waxes	12
Overview Extraction units	7	GEO Expert Gingiva , Esthetic modeling waxes	13
SILENT EC2 , Two workbench extraction	8	Dynex Brilliant , Separating and grinding discs	14
SILENT TC2 , Two workbench extraction	9	Dynex , Separating and grinding discs	14
SILENT TC , Single workbench extraction	10	Renfert Dental Education	15



Renfert

WORKFLOW GUARANTEE

3 year guarantee
10 year spare parts service
Activity guarantee



3 year guarantee*

All Renfert laboratory devices have a three year guarantee.* If at some point something does not function, you still have the comforting assurance that Renfert will find a solution to the problem within the guarantee. This builds trust.

*Wear parts excluded



10 year spare parts guarantee

All Renfert products are very durable. Therefore we guarantee a high availability of spare parts. Renfert guarantees that original spare parts will be available for every device, for the duration of at least ten years after purchase. This provides security.



The activity guarantee

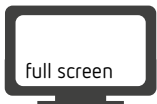
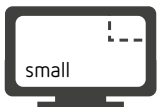
Renfert service is outstandingly efficient. In cooperation with Renfert dealers and certified service partners worldwide, a strong, competent and passionate team is focused on minimizing possible failures in the laboratory. This ensures efficiency.

EASY view 3D – whenever magnification makes work easy

- 1 Support for daily processing of classically fabricated and digitally manufactured precision work
- 2 Reliable quality control and quality management
- 3 Quick and easy communication with the dental practice, patients and specialists
- 4 Creation of photos and video sequences



INNOVATION BW
2018
 Innovation Award Baden-Württemberg
 Dr.-Rudolf-Eberle-Preis
 Recognition 2018

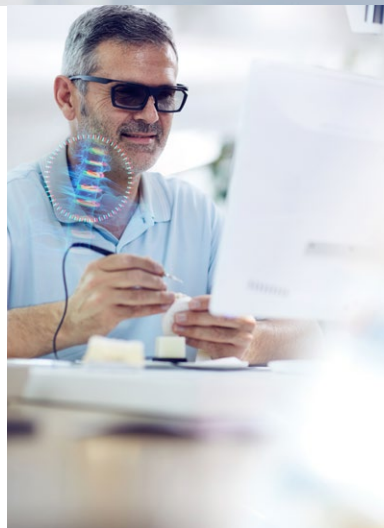


Split-screen function for parallel use of multiple images

With the split screen feature of the EASY view 3D video microscope, four different sized images can be projected on the work screen. All pictures can also be viewed in black-and-white mode, e.g. for the assessment of brightness values.

Optimum assessment of object structures in 3D mode

The EASY view 3D's three-dimensional mode enables easy hand-eye coordination and a natural working position. Its three-dimensional spatial representation is perfect for critically examining work objects. This makes many routine tasks, like finishing and modeling, much more precise and safer. Depending on the indication, a simple mouse click lets you toggle between the 3D and 2D modes.



Work ergonomically

A dental technician's work assumes a new dimension with the EASY view 3D: The ergonomic design enables a sustained natural and healthy posture. This enhances the users' well-being and performance. The flexible boom arm can be adjusted to any work situation and object. The monitor has been especially developed for system compatibility and ensures sharp high-definition image reproduction. Positioned behind the object, the monitor is ergonomically located for an unobstructed view of the work object.



Quick communication and documentation

The easy-to-use and intuitive functionality of the EASY view 3D helps you document work, share data with your team as well as the dentist's practice. Catch the monitor image by footswitch and store the screenshot on the USB flash drive or send it via LAN connection to your PC. Images and video sequences are stored in 2D mode.



perfect
view



EASYview 3D

3D video microscope

Renfert's EASY view 3D is an innovative video microscope featuring a 3D monitor, which is not only suited for viewing objects, for routine processing and quality control, but equally useful for educational, training and documentation purposes.

Technical data Head (incl. support arm)

Nominal voltage	100 / 120 / 230 V
Permissible mains voltage / frequency	100–240 V, 50/60 Hz
Power consumption	12 W
Video resolution	Full-HD (1920 x 1080)
Focus distance (from camera lens to object)	430 mm (17")
Magnification	15- /20-fold
Table top thickness with universal clamp	18–74 mm (0.71–2.92")

Technical data Monitor

Nominal voltage	100 / 120 / 230 V
Permissible mains voltage / frequency	100–240 V, 50/60 Hz
Screen resolution	Full-HD (1920 x 1080)
Recommended working distance from the screen	500–700 mm (19–28")
Dimensions (W x H x D)	511 x 377 x 170 mm (20.12 x 14.84 x 6.69")
Diagonal screen size	546.1 mm (21.5")

Ordering information

EASY view 3D , 100–240 V 50/60 Hz ¹	No. 2400 0500
EASY view 3D , 100–240 V 50/60 Hz with multi voltage power adapter ²	No. 2400 1500
EASY view 3D HDMI Video-Recorder ¹	No. 2400 0502
EASY view 3D HDMI Video-Recorder with multi voltage power adapter ²	No. 2400 0504
EASY view 3D HDMI-Splitter ¹	No. 2400 0503
EASY view 3D HDMI-Splitter with multi voltage power adapter ²	No. 2400 0505
EASY view 3D HDMI-Converter 3D/2D ¹	No. 2400 0501
EASY view 3D HDMI-Converter 3D/2D with multi voltage power adapter ²	No. 2400 0506

¹ Suitable for Europe except GB, IT, DK, FL, CH

² Suitable worldwide except European countries with CEE 7/3 socket

Scope of delivery EASY view 3D

EASY view 3D head with power supply unit and power cord (incl. LED-lighting), support arm with cable and base with universal clamp, 3D monitor with power supply unit and power cord, 3D polarization glasses, 4 GB USB flash drive, mouse, foot switch, desk pad, Quick Start Guide

**More information
available online**



Advantages

- The 3D mode enables natural hand-eye coordination when performing delicate tasks.
- Parallel use of patient photos, wax-up images, etc. within the workflow with split-screen function.
- High-resolution photos and video sequences can be generated in full HD quality for documentation and communication via a network or integrated USB flash drive.

Details

- Excellent recognition of different brightness values and surface textures with the black-and-white mode in 2D and 3D.
- Fatigue-free, ergonomic work possible thanks to sustained natural, healthy posture when viewing objects on the monitor.
- Precise, safe and controlled work possible under 15x or 20x fold magnification.

AUTO spin

Model system

Using the AUTO spin pin drill, precise working models with plastic base plates can be fabricated. The drilling unit is also compatible with other model-making systems like Giroform® or Zeiser®.



Advantages AUTO spin pin drilling unit

- Time and cost saving due to reduced use of dental plaster.
- Safe positioning and alignment in challenging impression situations due to the innovative Renfert Level Controller.
- Flexible use for almost any plate geometry due to the universal plate holder with secure double fixation.

Advantages AUTO spin system components

- AUTO spin base plates: Secure fixation and easy pin removal due to stable acrylic base plates with or without metal disc.
- AUTO spin cone pin-drill: Special cutting geometry for smooth inner surfaces and low compressive stress during drilling.
- AUTO spin cone pin: Cone pin of 14 mm in length for Renfert's AUTO spin system, Giroform®, Zeiser® or similar systems.

Technical Data

Permissible mains voltage	220–240 V 120 V
Permissible mains frequency	50/60 Hz
Power consumption during drilling	80 W
Power consumption in stand by mode	1.5 W
Laser class	2
Sound pressure level (LpA) in accord. with DIN EN ISO 11202	70 dB(A)
Dimensions (W x H x D)	180 x 368 x 275 mm 7.1 x 14.5 x 10.8"
Permissible drill shaft diameter Ø	3 mm ± 0.03 mm
Permissible drill length	34–46 mm 1.34–1.81"
Weight	~7.6 kg ~16.8 lbs

Ordering information

AUTO spin , 220–240 V 50/60 Hz	No. 1860 0000
AUTO spin , 120 V 50/60 Hz	No. 1860 1000
AUTO spin , 100 V 50/60 Hz	No. 1860 2000
AUTO spin base plate standard , 100 pieces	No. 1860 0100
AUTO spin base plate comfort , 100 pieces	No. 1860 0200
AUTO spin secondary plate , 50 pieces	No. 1860 0300
AUTO spin silicone putty , 1 kg 2.2 lbs	No. 1860 0400
AUTO spin cone pin-drill	No. 1860 0500
AUTO spin universal plate holder	No. 1860 0600
AUTO spin universal impression holder	No. 1860 0700
AUTO spin cone pin , 1000 pieces	No. 369 2000

Scope of delivery AUTO spin

AUTO spin, drill, plate holder, impression holder, Level Controller, adjusting tool for drilling depth (screwdriver Torx T5), tool for drill fixing (angled key Torx T10), laser sticker set, Quick Start Guide, AUTO spin system illustrated manual

More information
available online



Extraction units with maximum power and quietness

It is easy to concentrate and keep the workplace clean with the SILENT extraction units.

This is what makes work easier

- 1 extremely quiet
- 2 strong suction power
- 3 intuitive operation
- 4 very long motor running time
- 5 easy calibration
- 6 modern, compact design



silent



compact



Overview SILENT

	SILENT powerCAM EC	SILENT compactCAM	SILENT V4	SILENT EC2	SILENT TC2 NEW	SILENT TS2	SILENT TC NEW	SILENT TS	SILENT compact
Single workbench extraction							✓	✓	✓
Two workbench extraction				✓	✓	✓			
Four workbench extraction			✓						
Device extraction unit								✓	✓
CAM extraction	✓	✓							
Filter bag						✓		✓	
Bagless	✓	✓	✓	✓	✓		✓		✓
Collector motor		✓			✓	✓	✓	✓	✓
EC turbine	✓		✓	✓					

SILENT EC2

Two workbench extraction

Powerful, bag-free extraction unit with two independently controlled suction ports, automatic filter cleaning and EC motor technology.



silent



Advantages

- Secure production process through low-maintenance EC motor technology (> 5,000 operating hours).
- Consistent suction power thanks to automatic re-adjustment.
- Low operating noise of max. 55 dB (A).

Details

- No follow-up costs due to bag-free dust collection.
- Uninterrupted workflow due to easy motor change within a few minutes.

Technical data

Permissible mains voltage / frequency	220–240 V, 50/60 Hz 100–120 V, 50/60 Hz
Suction turbine power	1610 W (230 V) / 1440 W (120 V)
Volume flow (max.)	3984 l/min (2.34 ft ³ /s)
Max. depression	257 hPa / 2.9 psi (230 V) 262 hPa 3.80 psi (120 V)
Filter quality	Class M according to EN 60335-2-69
Max. permitted connected load of the plug-in socket	1840 W (230 V), 360 W (120 V)
Total connected power	3450 W (230 V) / 1800 W (120 V)
Min./ max. connection pressure external	4.5 bar (65 psi) / 8 bar (116 psi)
Number of suction hoses	2
Sound pressure level (LpA) (at max. volume flow)	55 dB (A)
Fill level dust drawer	~ 7.0 l (1.85 gal)
Weight (empty)	~ 18.5 kg (40.8 lbs.)
Dimensions (W x H x D)	285 x 535 x 540 mm (11.2 x 21.1 x 21.2")
Ø suction fittings interior	45 mm (1.77")
Ø suction fittings exterior	50 mm (1.97")

Ordering information

SILENT EC2 , 220–240 V 50/60 Hz	No. 2937 0000
SILENT EC2 , 100–120 V 50/60 Hz	No. 2937 1000
Suction hose , 3 m (with 2 mufflers)	No. 90003 4240
Suction hose , 6 m	No. 90115 0823
Suction hose , 9 m	No. 90215 0823
End bushings set , 2 pieces	No. 2921 0003
Starter-Kit Waste bag for SILENT TC/TC2/EC/EC2	No. 2934 0015
Waste bag for SILENT TC/TC2/EC2/powerCAM EC (25 pcs.)	No. 2934 0014
External ventilation for SILENT TC/TC2/EC2/powerCAM EC	No. 2937 0002
90° angled connector	No. 2934 0007

Scope of delivery SILENT EC2

SILENT EC2, Quick Start Guide, Quick Reference Card, compressed air tube (fixed on the unit), connection set, 2 pinch valves with suction supports (already installed), suction hose 4 m, 4 end mufflers

**More information
available online**





silent



SILENT TC2

Two workbench extraction

Powerful, bag-free extraction unit with two independently controlled suction ports, automatic filter cleaning and long-lasting collector motor.

Technical data

Permissible mains voltage / frequency	220–240 V, 50/60 Hz
Suction turbine power	850 W (230 V)
Volume flow (max.)	3980 l/min (2.34 ft ³ /s)
Max. depression	200 hPa / 2.9 psi (230 V)
Filter quality	Class M according to EN 60335-2-69
Max. permitted connected load of the plug-in socket	2000 W (230 V)
Total connected power	2850 W (230 V)
Min. / max. connection pressure external	4.5 bar (65 psi) / 8 bar (116 psi)
Number of suction hoses	2
Sound pressure level (LpA) (at max. volume flow)	55 dB (A)
Fill level dust drawer	7.0 l (1.85 gal)
Weight (empty)	~ 22.8 kg (50,3 lbs.)
Dimensions (W x H x D)	285 x 535 x 540 mm (11.2 x 21.1 x 21.2")
Ø suction fittings interior	45 mm (1.77")
Ø suction fittings exterior	50 mm (1.97")

Ordering information

SILENT TC2 , 220–240 V 50/60 Hz*	No. 29360000
Suction hose , 3 m (with 2 mufflers)	No. 900034240
Suction hose , 6 m	No. 901150823
Suction hose , 9 m	No. 902150823
End bushings set , 2 pieces	No. 29210003
Starter-Kit Waste bag for SILENT TC/TC2/EC/EC2	No. 29340015
Waste bag for SILENT TC/TC2/EC2/powerCAM EC (25 pcs.)	No. 29340014
External ventilation for SILENT TC/TC2/EC2/powerCAM EC	No. 29370002
90° angled connector	No. 29340007

* Available soon

Scope of delivery SILENT TC2

SILENT TC2, Quick Start Guide, compressed air tube (fixed on the unit), connection set, 2 pinch valves with suction supports (already installed), suction hose 4 m, 4 end mufflers

More information
available online



Advantages

- Constant suction power thanks to automatic re-adjustment.
- 1,000 operating hours guaranteed with the suction turbine due to innovative transformer control.
- Low operating noise of max. 55 dB (A).

Details

- No follow-up costs due to bag-free dust collection.
- Uninterrupted workflow due to easy motor change within a few minutes.

SILENT TC

Single workbench extraction

Powerful, bag-free extraction unit with automatic filter cleaning and durable collector motor.



silent



Advantages

- No follow-up costs due to bag-free dust collection.
- Low operating noise of max. 54.3 dB (A).
- 1,000 operating hours guaranteed with the suction turbine through innovative transformer control.

Details

- Uninterrupted workflow due to easy motor change within a few minutes.

Technical data

Permissible mains voltage / frequency	220–240 V, 50/60 Hz
Suction turbine power	850 W (230 V)
Volume flow (max.)	3980 l/min (2.34 ft ³ /s)
Max. depression	257 hPa / 3.73 psi (230 V)
Filter quality	Class M according to EN 60335-2-69
Max. permitted connected load of the plug-in socket	2000 W (230 V)
Total connected power	2850 W (230 V)
Number of suction hoses	1
Sound pressure level (LpA) (at max. volume flow)	54,3 dB (A)
Fill level dust drawer	7.0 l (1.85 gal)
Weight (empty)	~ 22.0 kg (50,3 lbs.)
Dimensions (W x H x D)	275 x 535 x 540 mm (10.8 x 21.1 x 21.3")
Ø suction fittings interior	45 mm (1.77")
Ø suction fittings exterior	50 mm (1.97")

Ordering information

SILENT TC , 220–240 V 50/60 Hz*	No. 2935 0000
Suction hose , 3 m (with 2 mufflers)	No. 90003 4240
Suction hose , 3 m, antistatic 3 m (with 2 mufflers)	No. 90003 4826
Suction hose , 6 m	No. 90115 0823
Suction hose , 9 m	No. 90215 0823
End bushings set , 2 pieces	No. 2921 0003
Starter-Kit Waste bag for SILENT TC/TC2/EC/EC2	No. 2934 0015
Waste bag for SILENT TC/TC2/EC2/powerCAM EC (25 pcs.)	No. 2934 0014
External ventilation for SILENT TC/TC2/EC2/powerCAM EC	No. 2937 0002
90° angled connector	No. 2934 0007

* Available soon

Scope of delivery SILENT TC

SILENT TC, Quick Start Guide, suction hose 3 m, 2 end mufflers

More information
available online





silent



SILENT powerCAM EC

Extraction unit for CAM systems

Powerful, bag-free extraction unit with automatic filter cleaning and EC motor technology for heavily used CAM units.

Technical data

Permissible mains voltage / frequency	220–240 V, 50/60 Hz 100–120 V, 50/60 Hz
Nominal voltage	230 V 220 V 120 V 100 V
Suction turbine power	1610 W (230 V) 1440 W (120 V)
Volume flow (max.)	3984 l/min (2.34 ft ³ /s)
Max. depression	257 hPa / 3.2 psi (230 V) 262 hPa / 3.80 psi (120 V)
Filter quality	Class M according to EN 60335-2-69
CAM interface	RJ 45 socket
PLC: Input signal / Output signal	2 x turbine suction level 1, suction level 2, turbine off, filter cleaning / 2 x filter cleaning – status information
Sound pressure level (LpA) (at max. volume flow)	54.3 dB (A)
Fill level dust drawer	~ 7.0 l (1.85 gal)
Weight (empty)	~ 18.0 kg (39.7 lbs)
Dimensions (W x H x D)	270 x 535 x 540 mm (10.6 x 21.1 x 21.2")
Ø suction fittings interior	42 mm (1.7")

Ordering information

SILENT powerCAM EC , 220–240 V 50/60 Hz	No. 29390000
SILENT powerCAM EC , 120 V 50/60 Hz	No. 29391000
Interface cable Type A , for vhf, 5-pin, 5 m	No. 29340005
Interface cable Type B , for Roland DG, 5 m	No. 29340006
Interface cable Type C , for imes-icore, 5 m	No. 29340008
Interface cable Type D , for Amann Girrbach, 5 m	No. 29340009
Interface cable Type E , for Yenadent, 5 m	No. 29340010
Interface cable Type F , for Zirkonzahn, 5 m	No. 29340011
Interface cable Type F , for Zirkonzahn with C14 adapter, 5 m	No. 29340012
Interface cable Type G , for vhf, 6-pin, from K5	No. 29340013
Suction hose , 3 m, antistatic 3 m (with 2 mufflers)	No. 900034826
Waste bag for SILENT TC/TC2/EC2/powerCAM EC (25 pcs.)	No. 29340014
External ventilation for SILENT TC/TC2/EC2/powerCAM EC	No. 29370002
90° angled connector	No. 29340007

Scope of delivery SILENT powerCAM EC

SILENT powerCAM EC, Quick Start Guide, Quick Reference Card, 3 disposal bags (1 pc. inserted in the dust drawer), suction hose 2 m, incl. 2 mufflers

“Why are our SILENT extractors so quiet? Some noises are more stressful than others. We worked with psycho-acousticians who showed us the unpleasant frequency ranges. This allowed us to minimize the noises drastically in this range and provide the units with a pleasant audio frequency.”

Joachim Egelhof, Management

Advantages

- Bi-directional communication between extraction unit and CAM unit thanks to the PLC interface.
- Low operating noise of max. 54.3 dB(A).
- Safe production process through low-maintenance EC motor technology (> 5,000 operating hours).

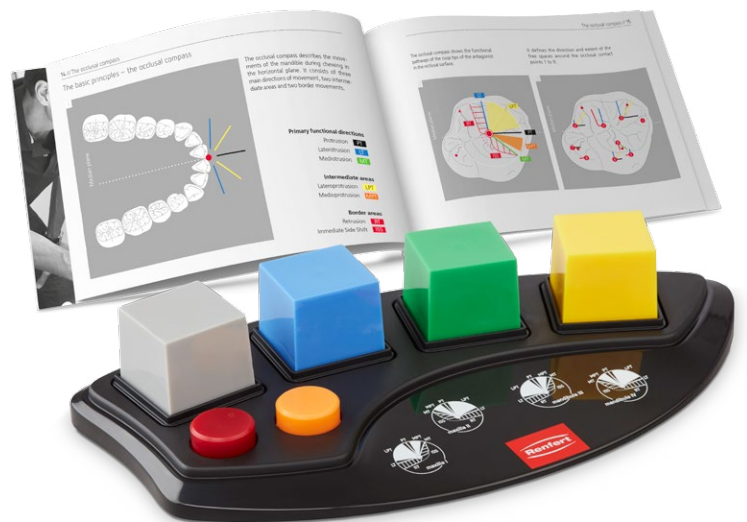
Details

- High suction power of 38 m/s.
- No follow-up costs due to bag-free dust collection.
- Uninterrupted workflow due to easy motor change within minutes.
- Safe disposal of fine milling dust with the help of a disposal bag.

GEO Expert Functional

Functional modeling waxes

GEO Expert Functional waxes are high-quality modeling waxes for functional wax-up according to the natural wax-up technique (NAT) by Dieter Schulz.



Advantages

- Perfect positioning of color coded occlusal surfaces thanks to coordinated flow and modeling properties.
- Easy implementation of functional tooth structures by following wax-up instructions.
- Flexible working as it is suitable for using the electrical wax knife and the Bunsen flame.

GEO Expert Functional Wax Set

Wax set for the production of functional models and restorations through the occlusal compass according to Dieter Schulz' "Natural waxing-up technique" and philosophy as well as the concept of Oliver Dreher.

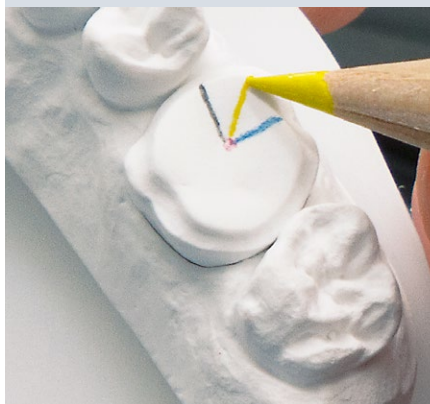
Ordering information

GEO Expert Functional Wax Set , German	No. 634 0900
GEO Expert Functional Wax Set , English	No. 634 0901
GEO Expert Functional Wax Set , Spanish	No. 634 0902
GEO Expert Functional Wax Set , Italian	No. 634 0903
GEO Expert Functional Wax Set , French	No. 634 0904
GEO Expert Functional Wax Set , Portuguese	No. 634 0905
GEO Expert Functional Wax Set , Russian	No. 634 0906
GEO Expert Functional Wax Set , Chinese	No. 634 0907
GEO Expert Functional Wax green , 40 g (1.41 oz.)	No. 634 0910
GEO Expert Functional Wax blue , 40 g (1.41 oz.)	No. 634 0920
GEO Expert Functional Wax yellow , 40 g (1.41 oz.)	No. 634 0930
GEO Expert Functional Wax gray , 40 g (1.41 oz.)	No. 634 0940
GEO Expert Functional Wax Set Refill red & orange , 4x4 g (4x0.14 oz.)	No. 634 0960

Scope of delivery GEO Expert Functional Wax Set

Wax presentation palette with transparent lid and user manual according to Oliver Dreher's philosophy; 4 modeling waxes of 40 g each: GEO Expert Functional wax gray, blue, green, yellow; 2 modeling waxes of 4 g each: GEO Expert Functional wax red, orange; 2 DIN A5 sheets with Occlusal Compass (24 labels each sheet)

**More information
available online**





GEO Expert Gingiva Set A. Bruguera

Esthetic modeling waxes

GEO Expert Gingiva waxes in pink and red are suitable for creating a gingival wax-up in the anterior and posterior regions, especially for implant super-structures.

Ordering information

GEO Expert Gingiva Set A. Bruguera, German	No. 6340800
GEO Expert Gingiva Set A. Bruguera, English	No. 6340801
GEO Expert Gingiva Set A. Bruguera, Spanish	No. 6340802
GEO Expert Gingiva Set A. Bruguera, Italian	No. 6340803
GEO Expert Gingiva Set A. Bruguera, French	No. 6340804
GEO Expert Gingiva Set A. Bruguera, Portuguese	No. 6340805
GEO Expert Gingiva Set A. Bruguera, Russian	No. 6340806
GEO Expert Gingiva Set A. Bruguera, Chinese	No. 6340807
GEO Expert Gingiva pink A. Bruguera, 40 g (1.41 oz.)	No. 6340700
GEO Expert Gingiva red A. Bruguera, 40 g (1.41 oz.)	No. 6340600

Scope of delivery GEO Expert Gingiva Set A. Bruguera

User guide according to the philosophy of August Bruguera; 2 gum colored modeling waxes of 40 g each: GEO Expert Gingiva pink, red

Range of applications

GEO Expert Gingiva	Conventional crown and bridge techniques	All-ceramics and pressable ceramics*	Esthetic wax-up	Special waxes
pink	✓	✓	✓	–
red	✓	✓	✓	–

*Burns without residue



Advantages

- Red and white esthetics are possible through two transparent and natural-looking pink and red gingiva modeling waxes.
- Easy fabrication of monolithic and esthetic wax-ups with the help of a guide according to August Bruguera's philosophy.
- Perfect in combination with the esthetic, tooth-colored modeling waxes from the GEO Expert Wax Set A. Bruguera.



Dynex Brillant

Separating and grinding discs



Size 1:1



Flexible diamond grinding and separating discs with glass fiber reinforcement, created for cutting, separating and trimming veneering ceramics, zirconium oxide and lithium disilicate.

Advantages

- Avoids material damages due to very low thermal impact.
- Safe separation and trimming of press sprues due to very good cutting characteristics and removal capacity.
- Gentle to material due to extremely low vibrations.

Dynex Brillant, 20 x 0.8 mm

- Extremely stable and high removal capacity, especially suited for processing and grinding lithium disilicate.

Dynex

Separating and grinding discs



Size 1:1



Flexible and robust, double glass fiber reinforced separating and grinding discs for precious and non-precious metal as well as model cast alloys.

Advantages

- Efficient separation and precise processing.
- Processing safety due to top separating and cutting performance.
- Gentle to material due to extremely low thermal impact.

Dynex, 22 x 0.15 mm

- Suitable for precise cutting and economic separating of precious and non-precious metal interdental areas.

Technical data

Max. rpm	50,000
Recommended rpm	5,000

Ordering information

Dynex Brillant, Ø 20 mm (0.79"), thickness 0.80 mm (0.03"), 1 piece No. 560820

Technical data

Max. rpm	50,000
Recommended rpm	15,000

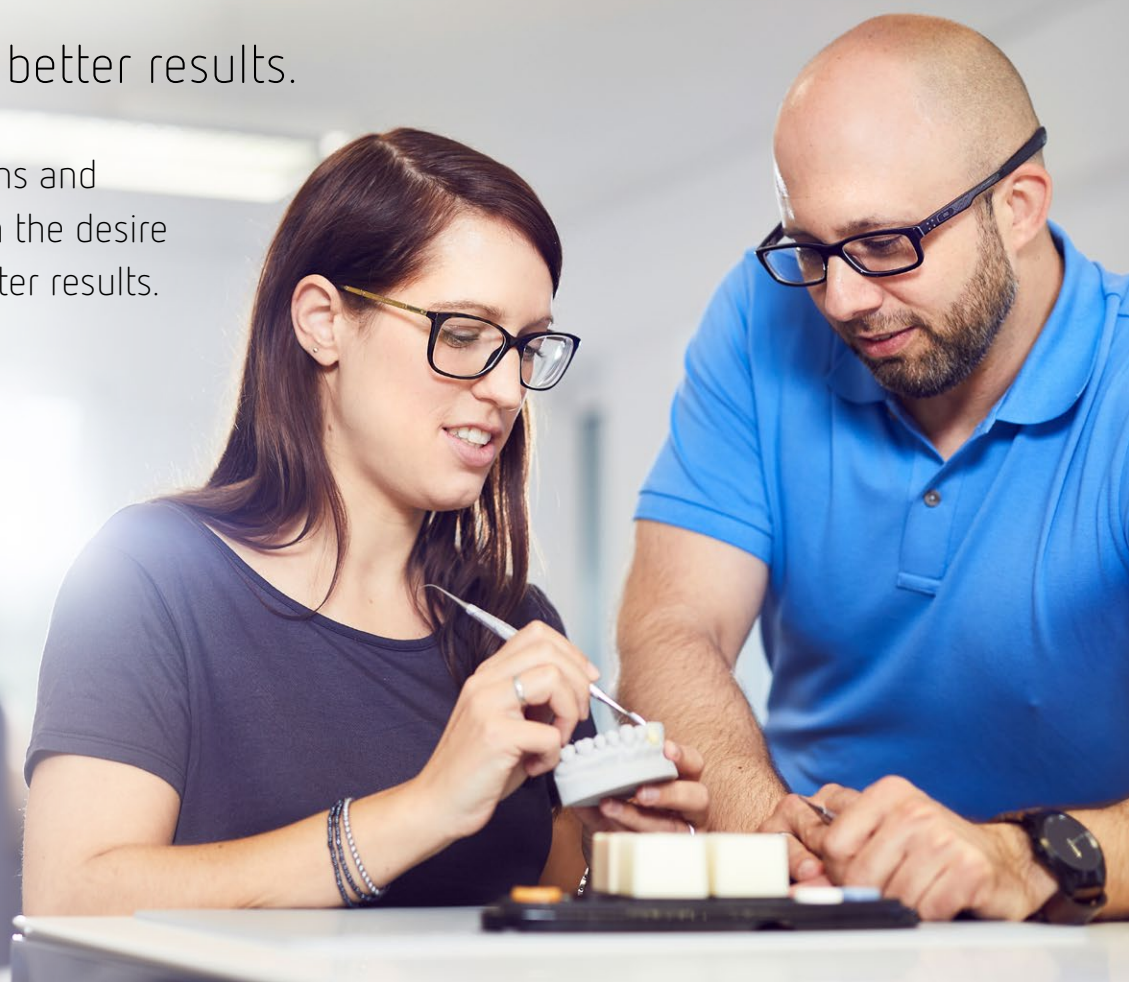
Ordering information

Dynex, Ø 22 mm (0.87"), thickness 0.15 mm (0.01"), 20 pieces No. 571522

Dental Education

More knowledge, better results.

Regular learning sessions and interaction coupled with the desire to improve, leads to better results.



Renfert Course Topics

- Histo-anatomic structure
- Esthetic and hyperrealistic wax-ups
- Dental photography
- Dental communication training
- Layering ceramics, pressable ceramics and CAD/CAM technology
- Monolithic and diagnostic wax-ups
- Model production – the lab’s showpiece
- Functional theory and near-to-nature wax-up techniques

The right course for every need

As well as the courses for experienced dental technicians, we also offer a range of specifically designed courses for trainees and junior dental technicians. We promote the junior staff and elaborate the basis for functional and natural looking restorations together.



Renfert Course Program

Your motivation and our passion for improvement allow us to offer you an array of interesting courses presented by top lecturers in modern surroundings.

Course program and contents
renfert.com/education





Why a passion for dental craftsmanship and making work easy go hand in hand for Renfert.

At Renfert, we strive to make the dental technicians' and dentists' work easier and enable an ideal workflow. Our equipment and materials are developed in close cooperation with the people who work with them daily. Many users prize the quality and rely on this claim every day they work with Renfert products.

↓
making work easy



**WORKFLOW
GUARANTEE**

- 3 year guarantee
- 10 year spare parts service
- Activity guarantee

www.renfert.com